



WELCOME



COMPANY PROFILE

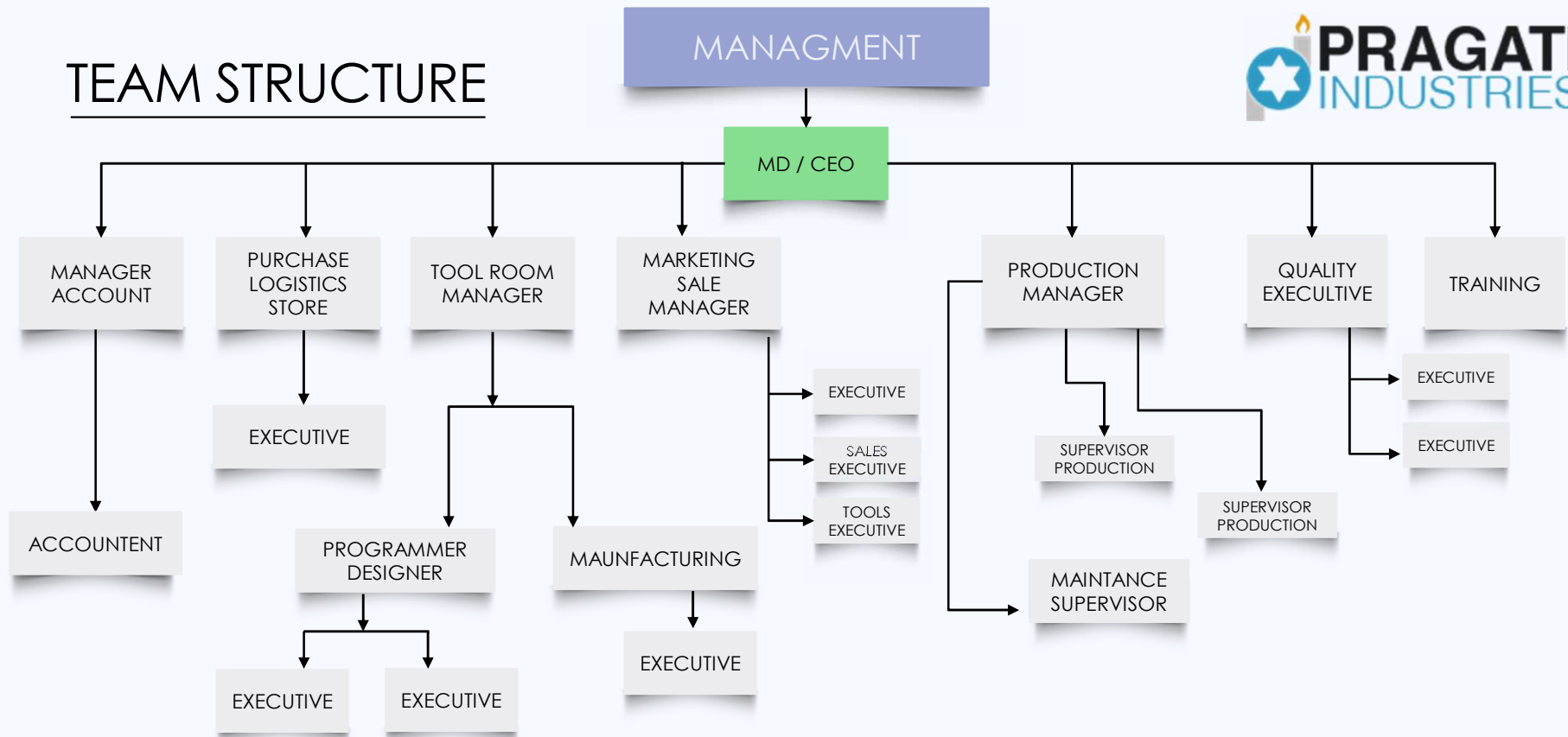
- Plastic Moulded Parts / Assemblies / Signal Lights / Reflectors / Warning Triangles / Decorative Parts / Electroplating Parts / Hot Stamping Parts/ Painted Parts / Doming Labels & Stickers / Emblems.
- Manufacturers of Die & Moulds.
- Experienced workforce to suit all your needs.
- ISO 9001:2015 Certified Manufacturing Company.

INFRASTRUCTURE

- AREA 2000 SQ. METER IN HARYANA GOVT. HSIIDC IND. ESTATE.
- 12000 SQ. FT. COVERED AREA.
- WELL CONNECTED BY ROAD ON NH-907.
- POWER SUPPLY BY HARYANA GOVT. & GENERATOR BACKUP.
- WATER SUPPLY BY HSIIDC.



TEAM STRUCTURE



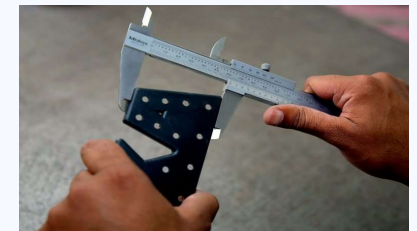
FACILITIES AVAILABLE



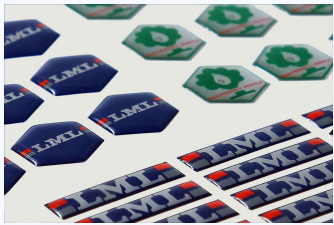
SR. NO.	NAME OF MACHINERY	CAPACITY	QTY
1	VMC	1250 X 650 MM	2
2	EDM MACHINE	E.S.M – 5030	1
3	VERTICAL MILLING MACHINE	42" / 9"	1
4	LATHE MACHINE	350 X 1950 MM	2
5	LATHE MACHINE	320 X 1550 MM	2
6	SHAPING MACHINE STROKE MAKER – B.S.M	24"	1
7	RADIAL DRILL MACHINE	2"	1
8	GEARED PILLER TYPE DRILL MACHINE	1"	4
9	PLASMA CUTTER	20MM PENITRATION	1
10	SURFACE GRINDER WITH AUTOFEED	24" X 12"	1



SR. NO.	NAME OF MACHINERY	CAPACITY	QTY
11	HAND TOOL GRINDER	4"	2
12	STAMPING	HOT FOIL	8
		✓ CHROME	
		✓ GOLD	
		✓ SILVER	
✓ ALUMINIUM			
13	WELDING	✓ ULTRASONIC	1
14	PAINTING	✓ SPRAY PAINTING	4
		✓ SYRING PAINTING	
		✓ SCREEN PAINTING	
15	INJECTION MOLDING MACHINE	25 TON – 800 TON	
16	ELECTROPLATING PLANT	✓ Ni CHROME ON ABS	1
		✓ Zinc ACID ON METAL	
		✓ GOLD PLATING	
17	GENERATOR	125 KVA	1



PRODUCTS RANGE



DOME LABELS & STICKERS



PLASTIC ASSEMBLIES



PLASTIC MOULDINGS



BLINKERS AND TAIL LIGHTS



ELECTROPLATED PARTS



EMBLEMS AND MONOGRAMS



REFLEX REFLECTORS



HOT FOIL STAMPED PARTS



PAINTED PARTS



TYPE OF CUSTOMERS

Two Wheeler

Three Wheeler

Four Wheeler

Tractors

Railways

Energy Sector

Commercial Vehicles

CUSTOMERS



OUR MANAGEMENT



Darshan Lal Jain (VISIONARY)

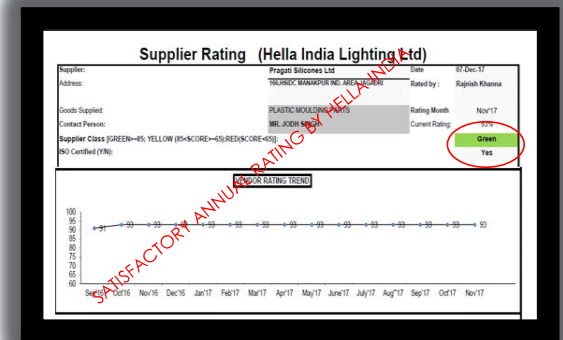
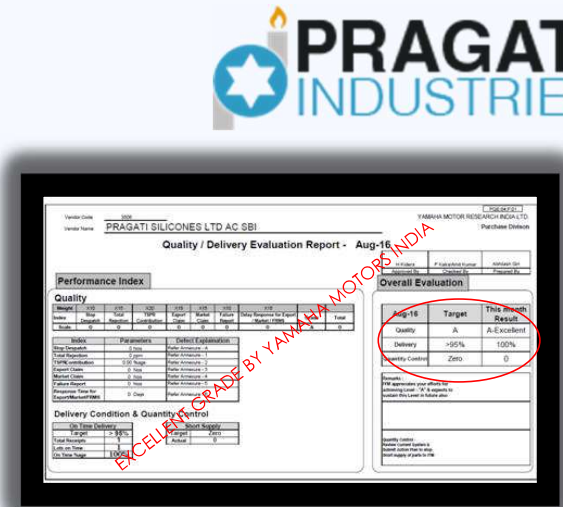


Neeraj Jain (PG, COMMERCE)



Maardav Jain (B.TECH, PEC, CHD)

CERTIFICATION & CUSTOMER AWARDS



CAPACITY

- In house Tool room & Design Center with CAD/CAM back up.
- Plastic Injection Moulding facility from 25T to 800T
- Hot foiling stamping facility up to 10,000 pcs/Shift.
- ABS electroplating facility up to 2,000 sq. ft. / shift
- Screen printing facility up to 1,000 pcs / shift.
- Ultrasonic Sealing facility up to 1,000 parts / shift.
- Assembly 1,000 pcs / Day.
- Paint facility 1,000 pcs / shift

FUTURE DEVELOPMENT

- ADDING 5000 SQ METER AREA.
- TOOL ROOM UPGRADATION.
- ADD MOULDING MACHINE.
- UPGRADE POST MOULDING OPERATIONS.
- UPGRADE PLATING TESTING FACILITES.

CONTACT US



Website

www.pragatiinds.com



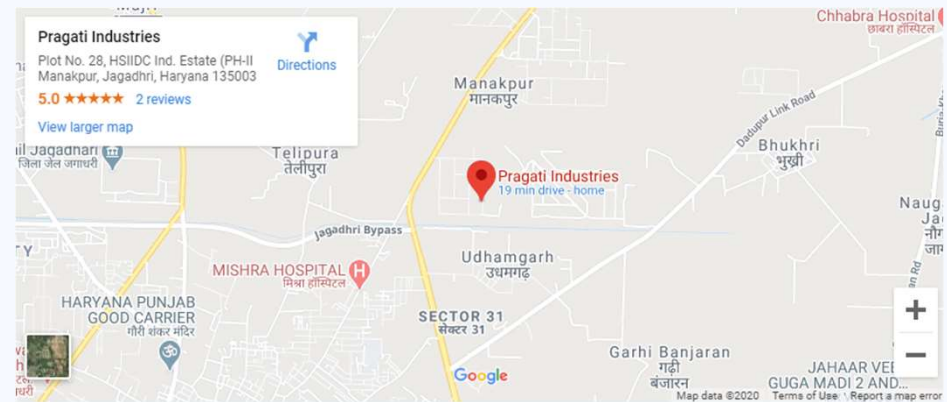
Email

info@pragatiinds.com



Phone

098131-78548



Head Office Cum Works

#28, Sector-30, HSIIDC Industrial Estate (Phase - II)
Manakpur, Jagadhri - 135003

Distt. Yamuna Nagar (Haryana) India



THANKS