



**WELCOME**

## OUR MANAGEMENT



**Padma Bhushan**  
**Late Sh. Darshan Lal Jain**  
(VISIONARY)

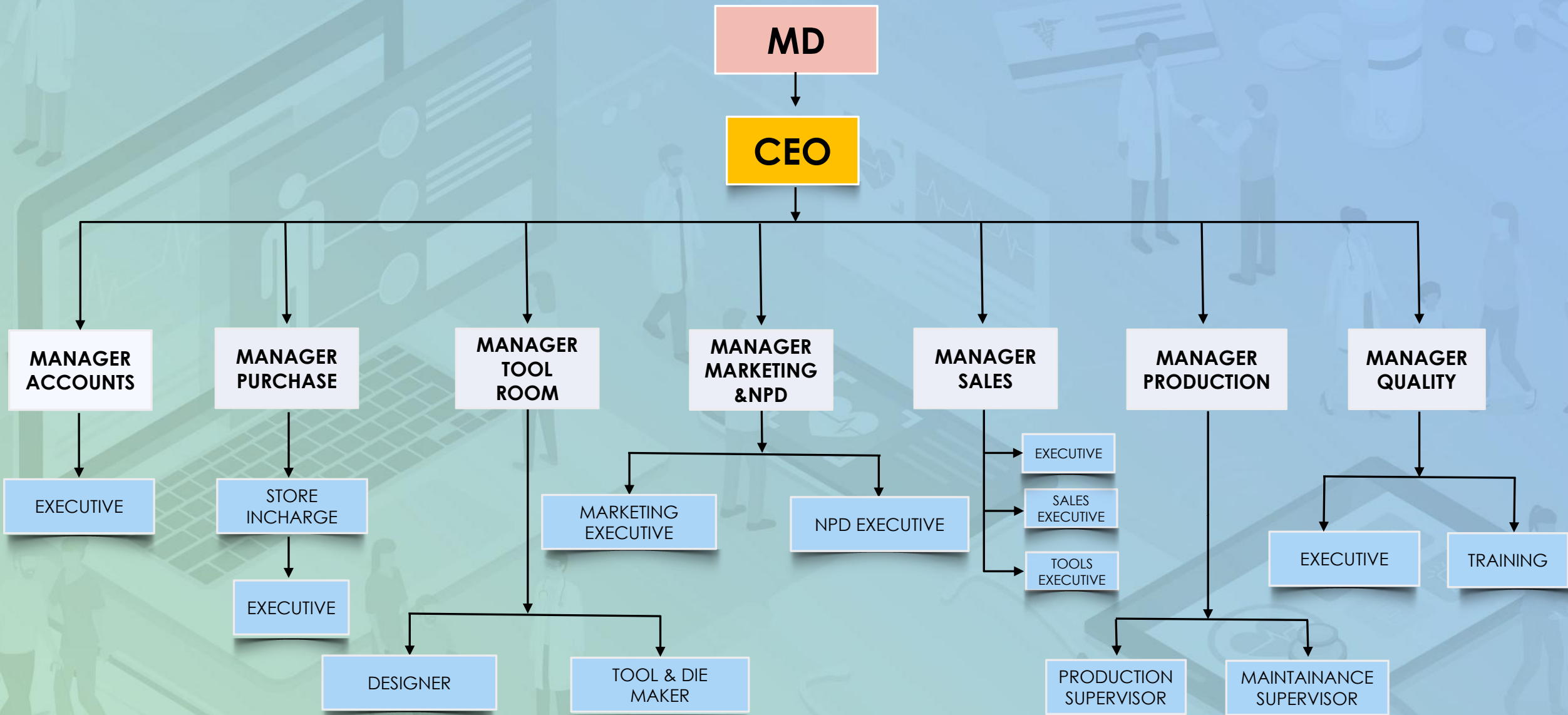


**Neeraj Jain**  
(PG, COMMERCE)



**Maardav Jain**  
(B.TECH, PEC, CHD)

# TEAM WORK



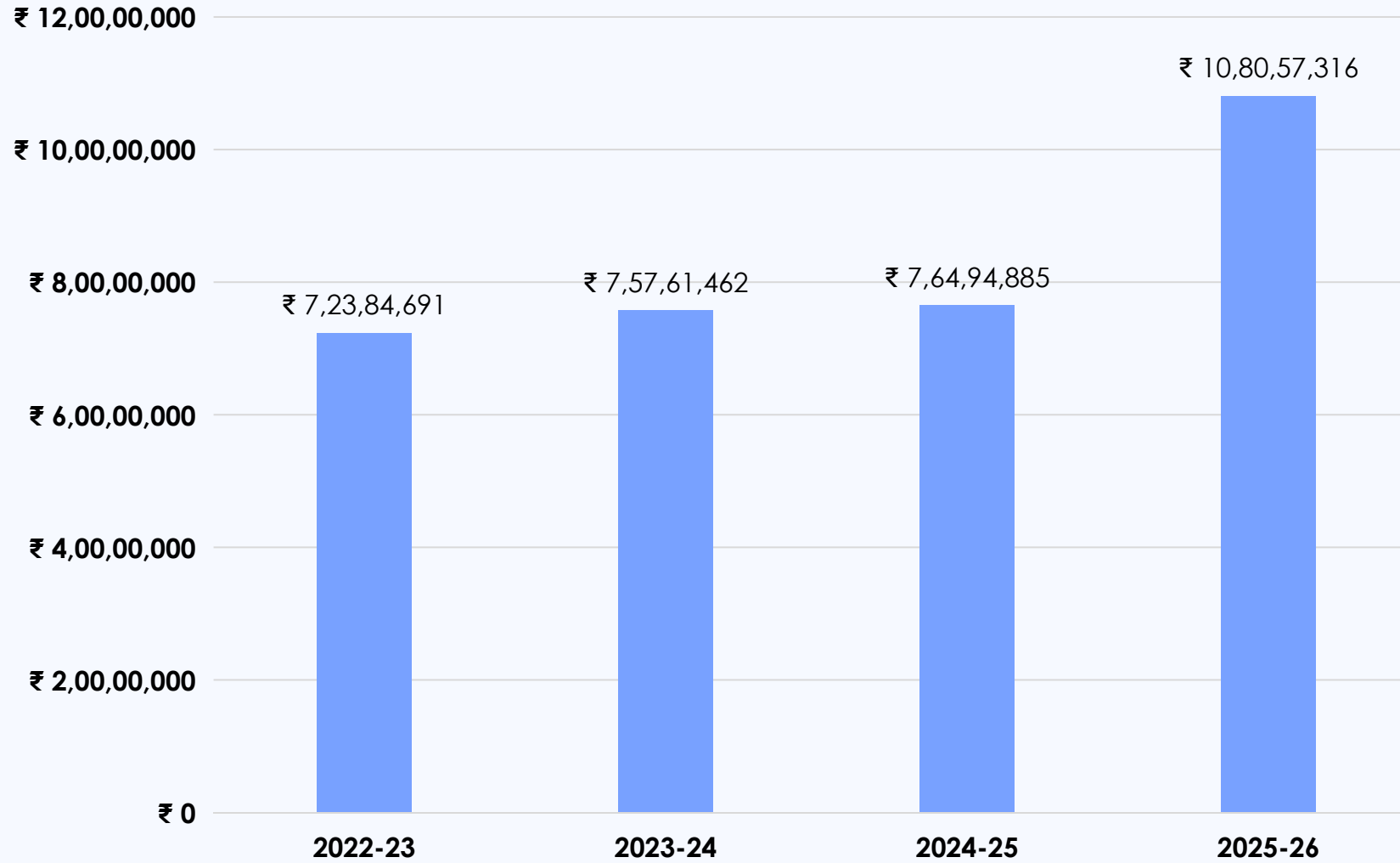
# **INFRASTRUCTURE**

- **AREA 4000 SQ. METER IN HARYANA GOVT. HSIIDC IND. ESTATE.**
- **18000 SQ. FT. COVERED AREA.**
- **WELL CONNECTED BY AIR, RAIL AND ROAD ON NH-907.**
- **EASTERN DFC (DEDICATED FREIGHT CORRIDOR) PASSING THROUGH OUR INDUSTRIAL TOWN**
- **POWER SUPPLY BY HARYANA GOVT. & GENERATOR BACKUP.**
- **WATER SUPPLY BY HSIIDC.**

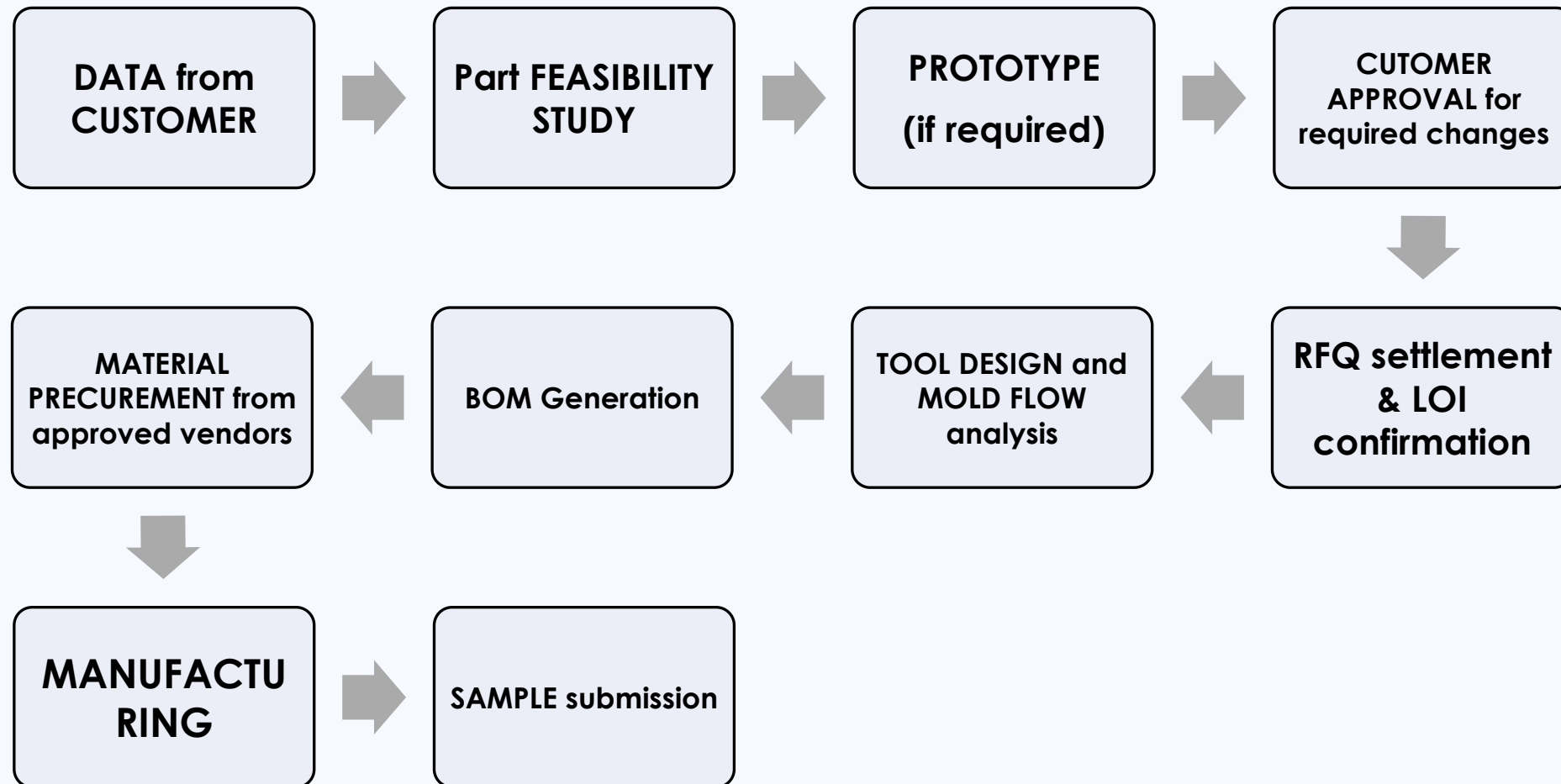


# OUR SALES

## Sale Turnover



# PRODUCT DEVELOPMENT PROCESS



# FACILITIES with CAPACITIES

<u>FACILITIES</u>	<u>CAPACITIES</u>
• In house Tool room & Design centre, with licensed SolidWorks & Solid CAM	size 970mm x 800mm along with jigs
• Plastic Injection Moulding	25T to 650T (1.5 lac pcs per month)
• Hot foiling stamping	10,000 pcs / shift
• ABS electroplating	2,000 sq. ft. / shift
• Screen/ Pad printing	1,000 pcs / shift
• Ultrasonic Sealing	1,000 pcs / shift
• Assembly	1,000 pcs / shift
• Painting	1,000 pcs / shift



# RAW MATERIAL PROCESSED

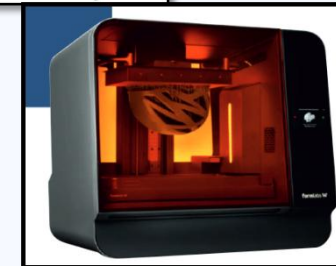
<u>MATERIAL NAME</u>	<u>MATERIAL GRADE</u>	<u>COMPANY NAME</u>
<ul style="list-style-type: none"><li>• ABS</li></ul>	<ul style="list-style-type: none"><li>• ABS MIF45 NC</li><li>• ABS 700 IFB WHITE</li><li>• ABS EP200</li></ul>	<ul style="list-style-type: none"><li>• BHANSALI</li><li>• ABSOLAC</li><li>• ABSOLAC</li></ul>
<ul style="list-style-type: none"><li>• NYLON 6</li></ul>	<ul style="list-style-type: none"><li>• M28RC</li></ul>	<ul style="list-style-type: none"><li>• GSFC</li></ul>
<ul style="list-style-type: none"><li>• NYLON 6 GF 15%</li></ul>	<ul style="list-style-type: none"><li>• NYLON 6 GF 15LT</li></ul>	<ul style="list-style-type: none"><li>• ASCEND</li><li>• KINGFA</li></ul>
<ul style="list-style-type: none"><li>• NYLON 6 GF 30%</li></ul>	<ul style="list-style-type: none"><li>• SGF 30 MI BLACK</li></ul>	<ul style="list-style-type: none"><li>• ENVAILOR</li><li>• KINGFA</li></ul>
<ul style="list-style-type: none"><li>• POPYPROPELENE (PP)</li></ul>	<ul style="list-style-type: none"><li>• PP H110MA</li></ul>	<ul style="list-style-type: none"><li>• RELIANCE</li></ul>
<ul style="list-style-type: none"><li>• PP GF 30%</li></ul>	<ul style="list-style-type: none"><li>• PF303</li></ul>	<ul style="list-style-type: none"><li>• PLAST ALLOY</li></ul>
<ul style="list-style-type: none"><li>• PP-EPDM</li></ul>	<ul style="list-style-type: none"><li>• 91497PBLK</li></ul>	<ul style="list-style-type: none"><li>• PLAST ALLOY</li></ul>
<ul style="list-style-type: none"><li>• PC+ABS</li></ul>	<ul style="list-style-type: none"><li>• BR56000X</li></ul>	<ul style="list-style-type: none"><li>• DR INTERNATIONAL</li><li>• POLY ALLOY</li></ul>

# RAW MATERIAL PROCESSED

<u>MATERIAL NAME</u>	<u>MATERIAL GRADE</u>	<u>COMPANY NAME</u>
• PC+PBT	• POCAN C1202	• ENVAILOR
• POLYCARBONATE (PC)	• 1220UR • 2407 • 2217 550207	• INFINO • COVESTRO • COVESTRO
• ASA	• LI941	• LG CHEMICAL
• PVC		• SRI RAM POLYTECH
• PMMA	• LXIH830A	• LG CHEMICAL
• HDPE	• HDPE 50MA180	• RELIANCE IND. LTD.
• LDPE	• LDPE 16MA400	• RELIANCE IND. LTD.
• PBT	• ARNITE TV4261	• ENVAILOR

# **COMMON ENGG. CLUSTER FACILITIES**

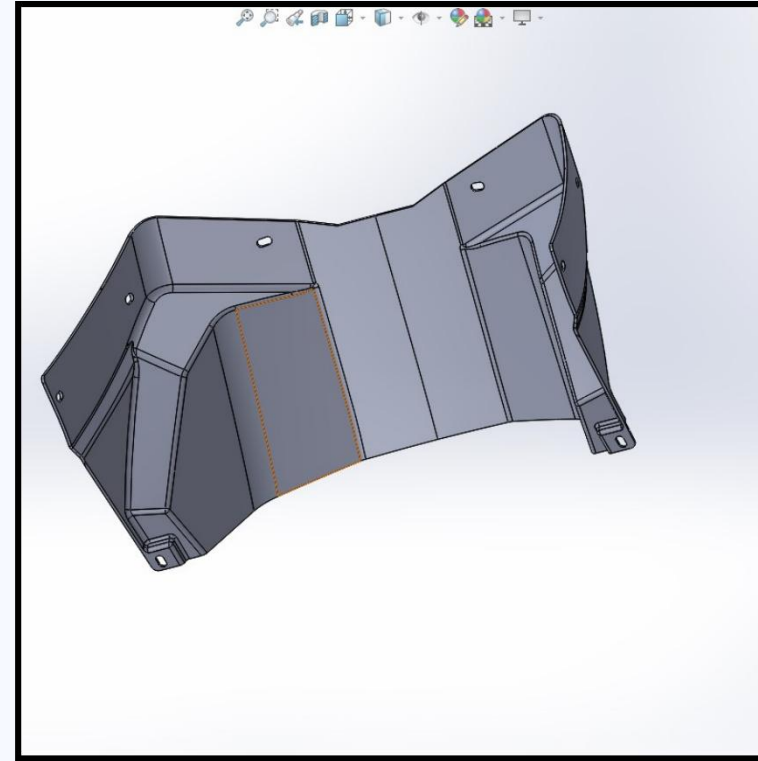
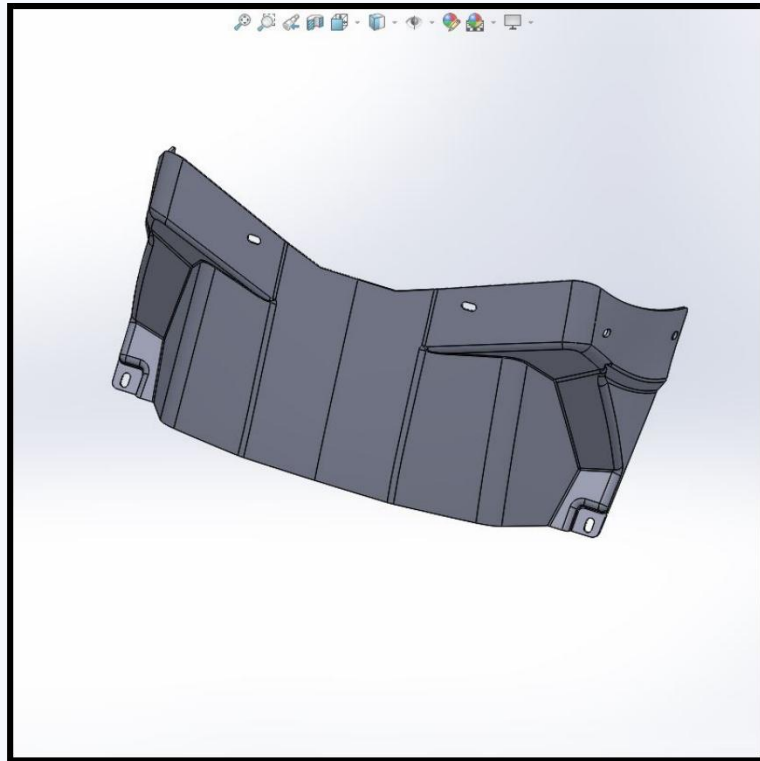
<b>SR. NO.</b>	<b>NAME OF MACHINERY</b>	<b>CAPACITY</b>
1	VMC	1020 X 510 MM 820 X 510 MM
2	EDM MACHINE	ELECTRONICA 980 X 590 MM BED
3	VERTICAL TURNING LATHE	2500 X 2000
4	CNC LATHE MACHINE	300 X 500 MM
5	HORIZONTAL MACHINING CENTRE	800 X 730 MM
6	3D PRINTER SLA TECH	335 X 200 X 300 MM
7	3D SCANNER FOR REVERSE ENGINEERING	2000 X 2000 MM
8	ROBOTIC WELDING	1500 X 3000 MM 3MTR TRAVEL 2MTR REACHABILITY
9	VISION MEASURING MACHINE	300 X 200 X 200 MM



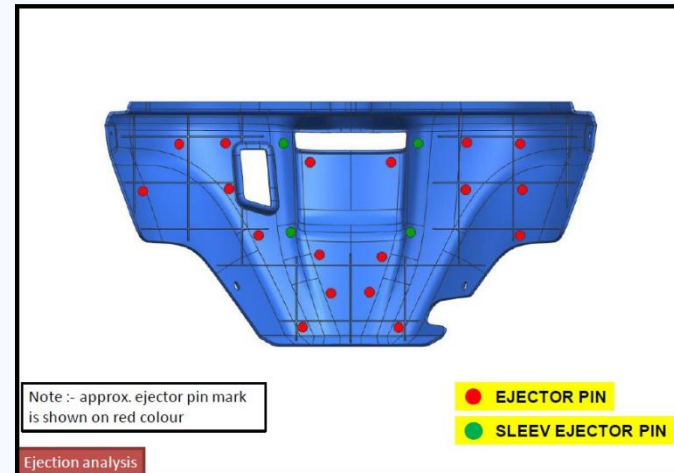
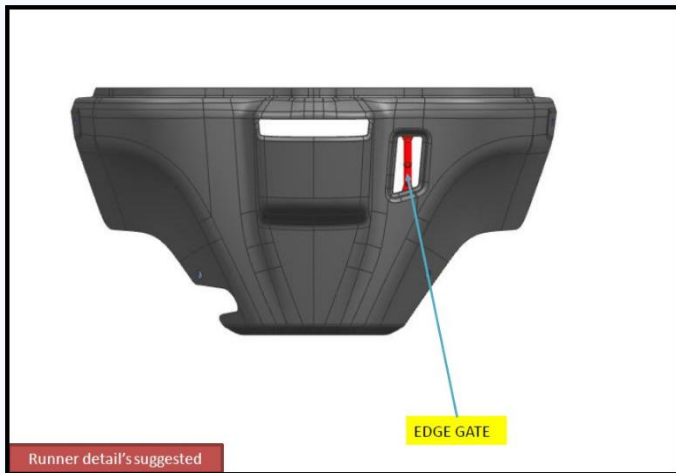
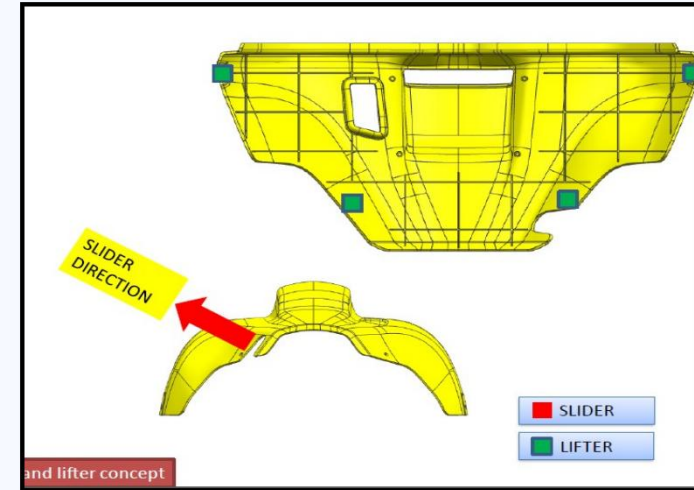
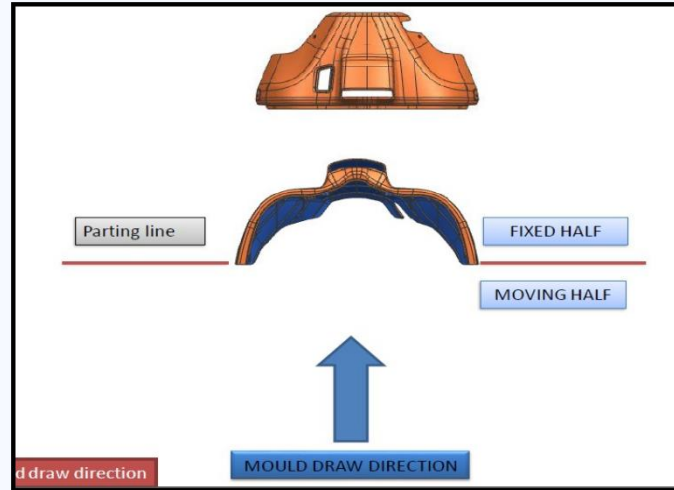
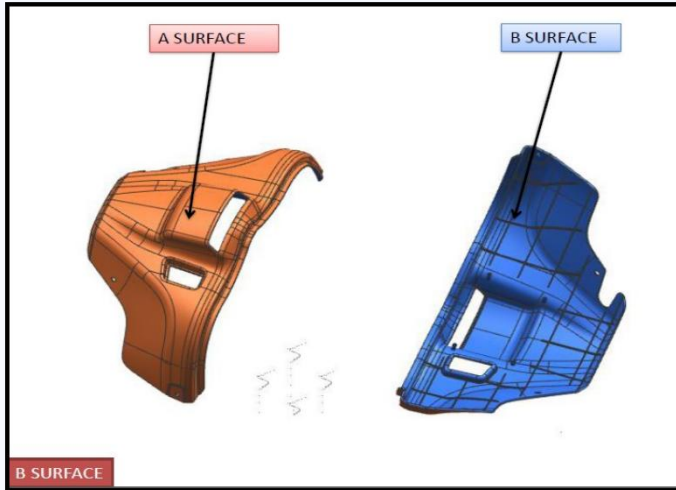
SR. NO.	NAME OF MACHINERY	CAPACITY
10	CMM MACHINE	800 X 1500 X 600 MM
11	UTM MACHINE	
12	HARDNESS TESTER	VICKERS BRINELL ROCKWELL
13	PAINT GLOSS METER	
14	COATING THICKNESS TESTER	
15	TORSION TESTER	
16	SALT SPRAY TEST	
17	PROFILE PROJECTOR	200 X 100 MM
18	SPECTROPHOTOMETER	

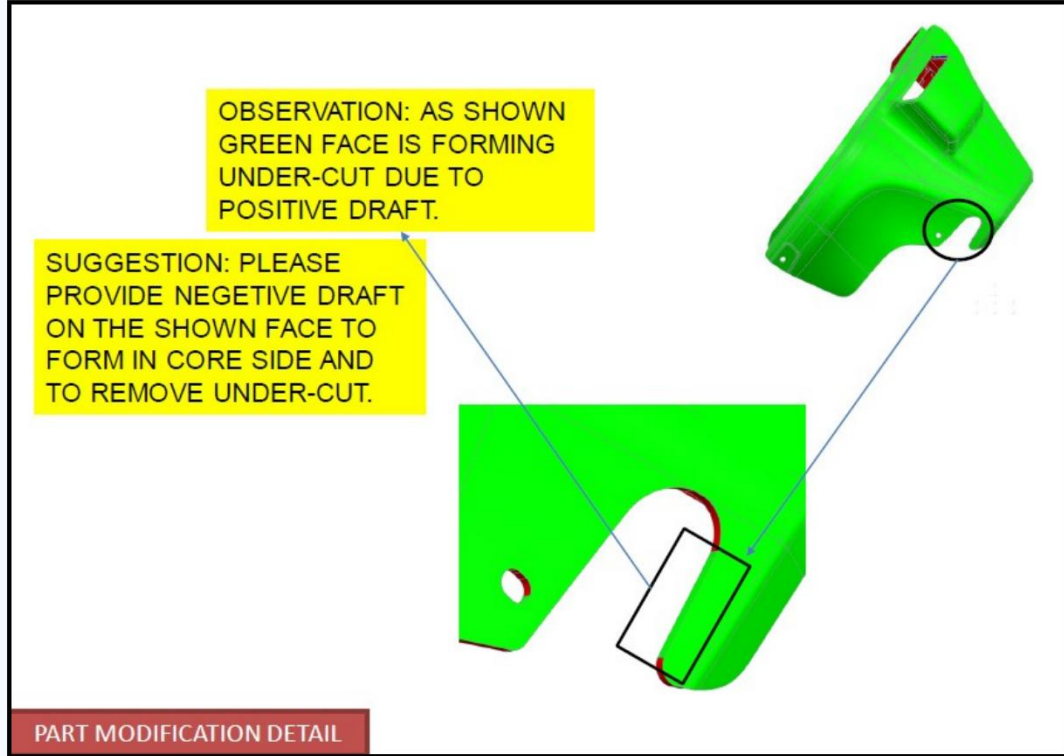
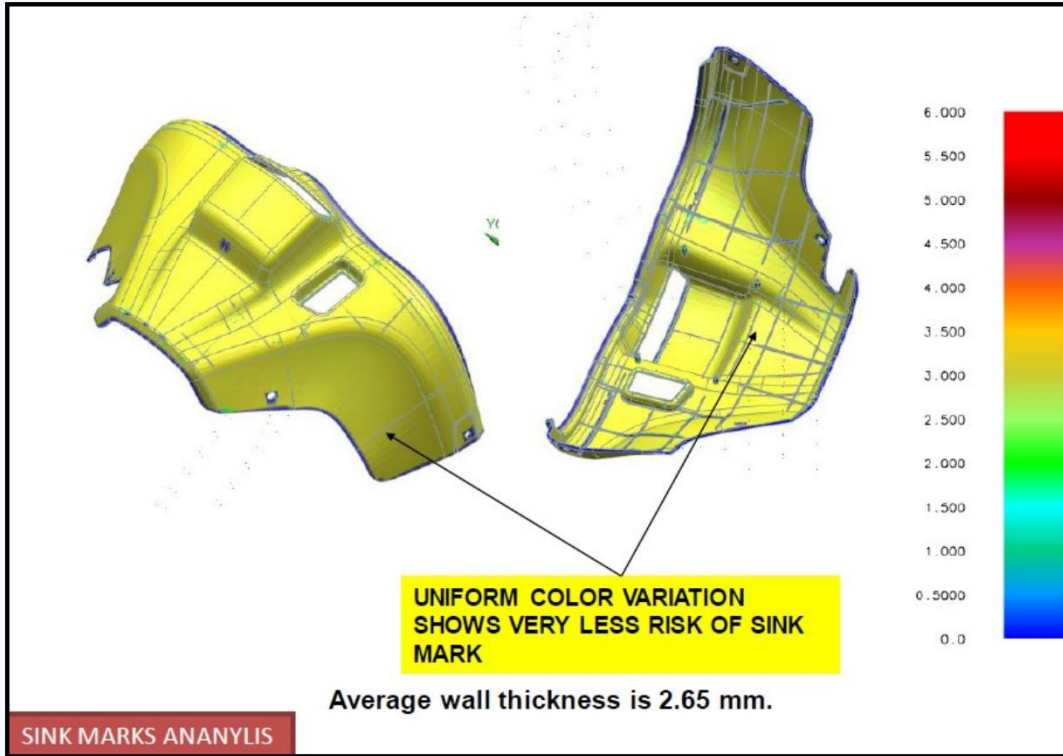


# DATA FROM CUSTOMER

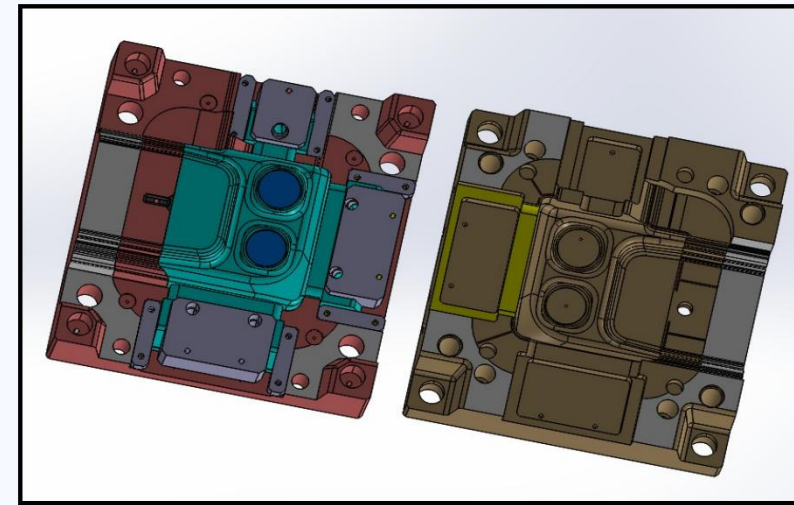
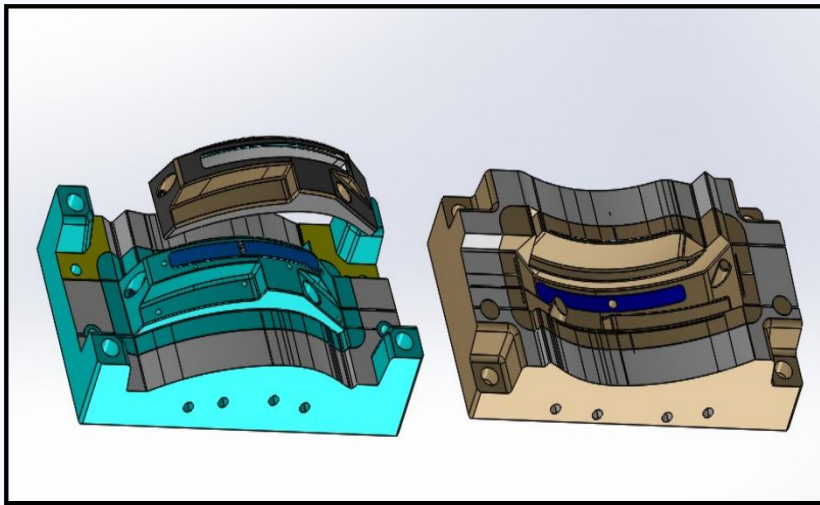
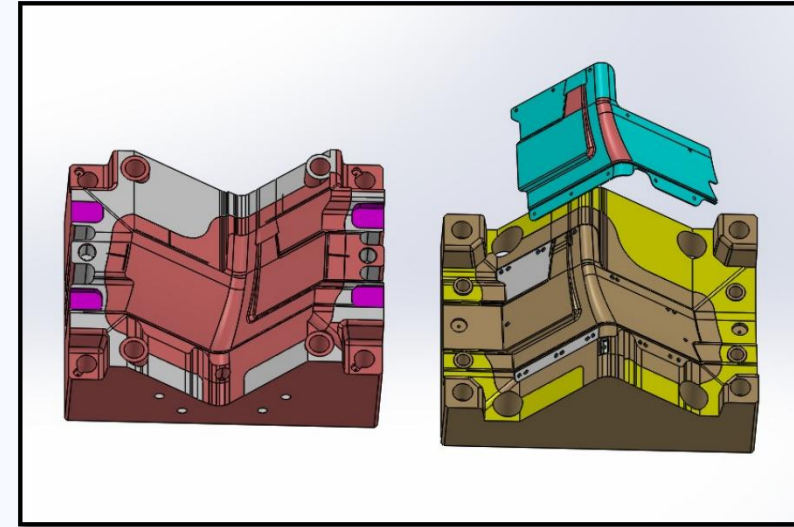
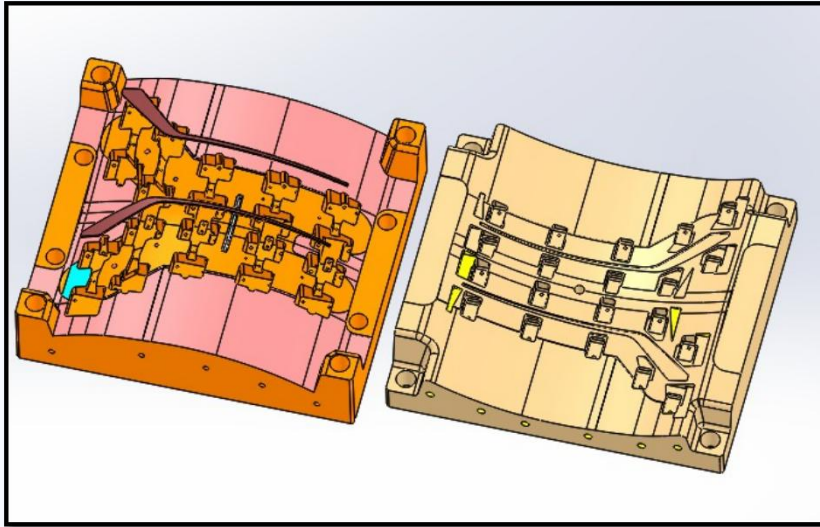


# FEASIBILITY ANALYSIS

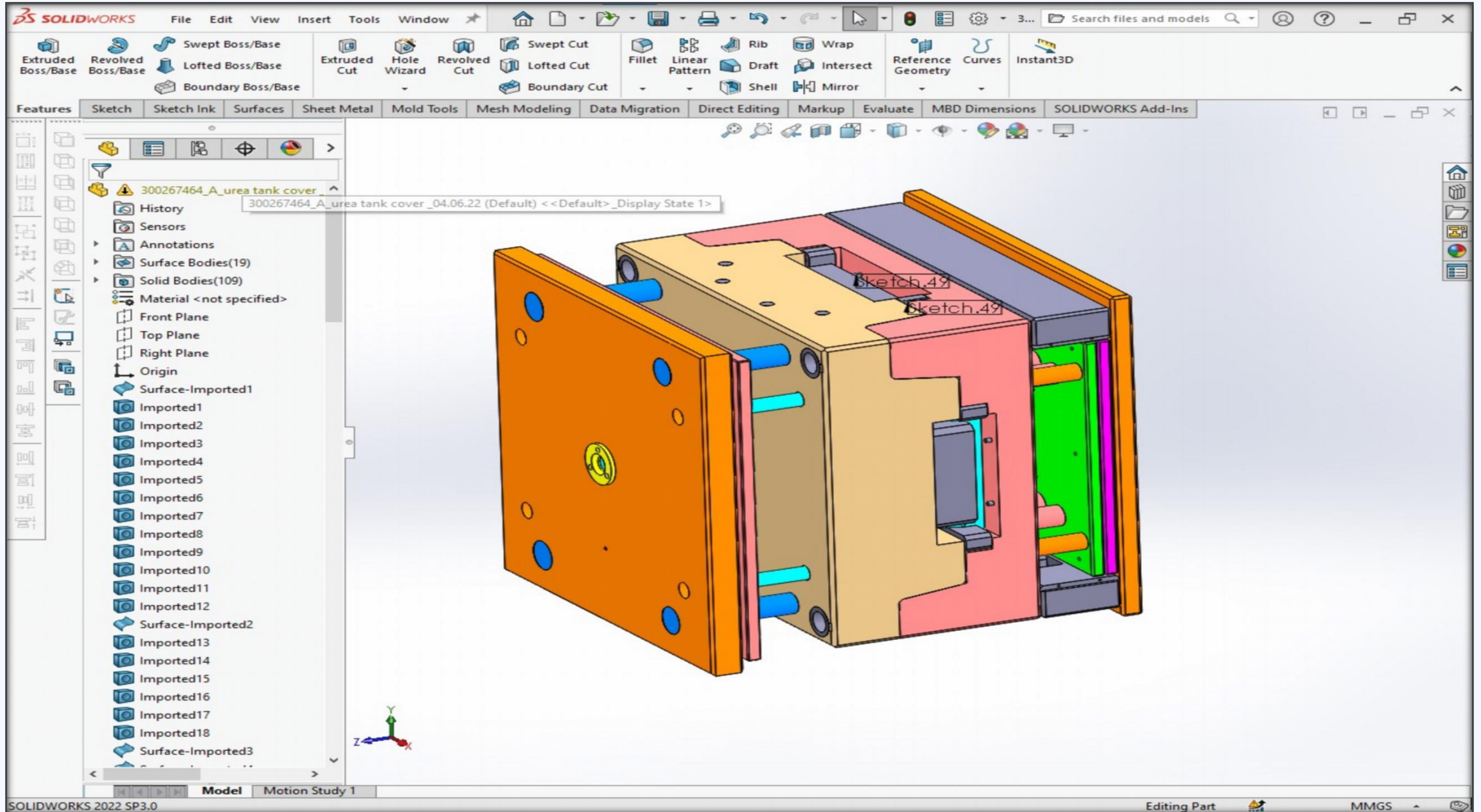




## Mold design of DIES of size 760 x 600 x 340mm (approx.)



# COMPLETE THREE PLATE MOLD

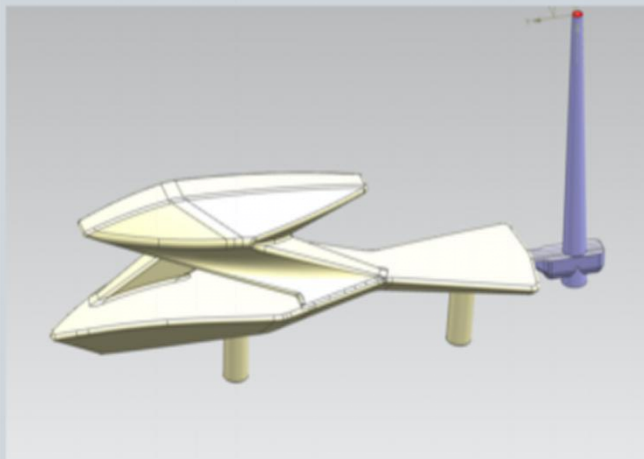


# MOLDFLOW ANALYSIS

## Cavity Layout & Feed System

- Gate point locations and feed system designs are as Shown below

01 Cavity

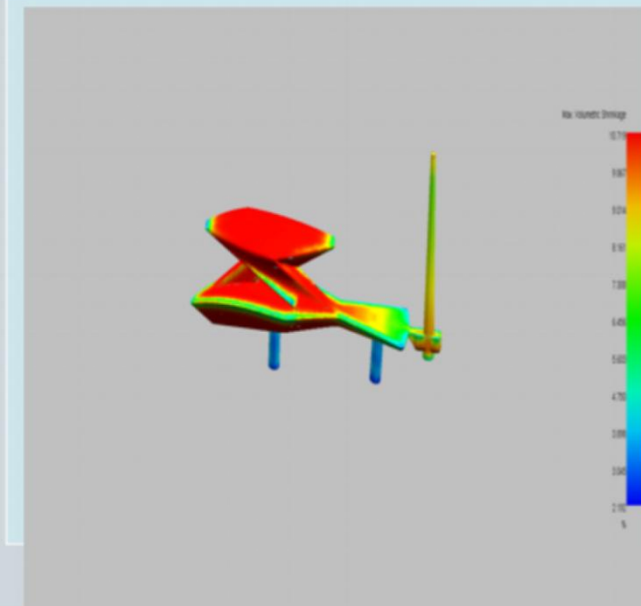


FAN Gate / Edge Gate  
Part bottom side (B-surface)

Gate Size / Overlap :- 5 x 1 mm  
Main runner :- 15X6X5 mm

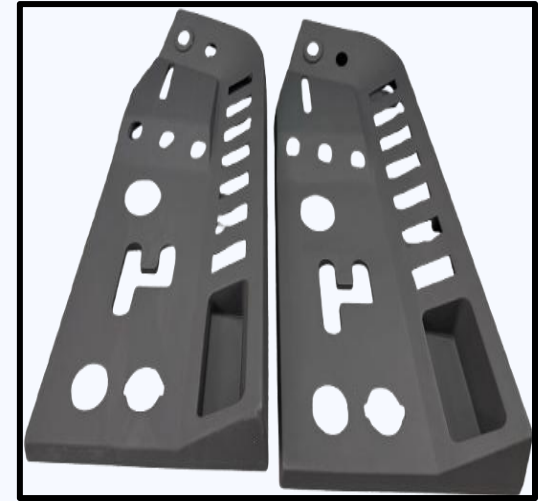
## Max. Volumetric Shrinkage

### Max. Volumetric Shrinkage



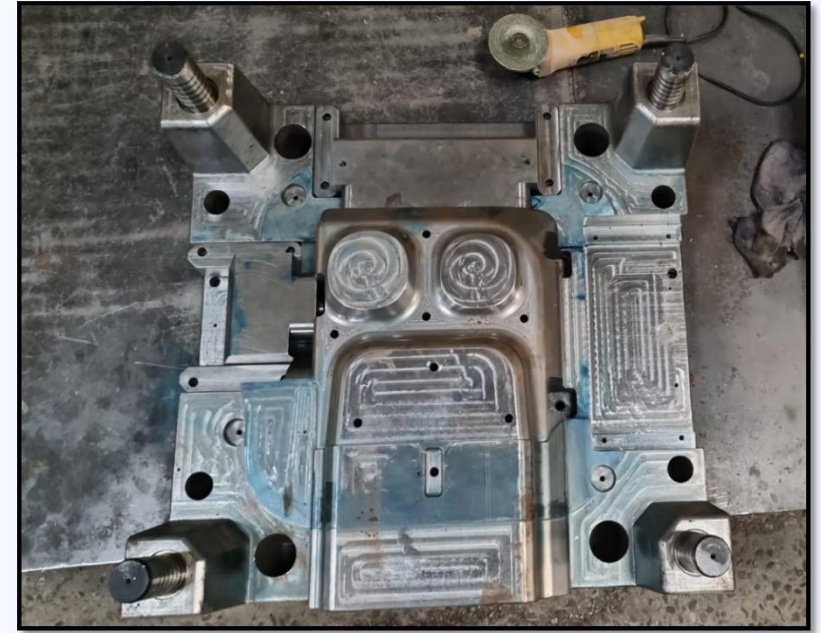
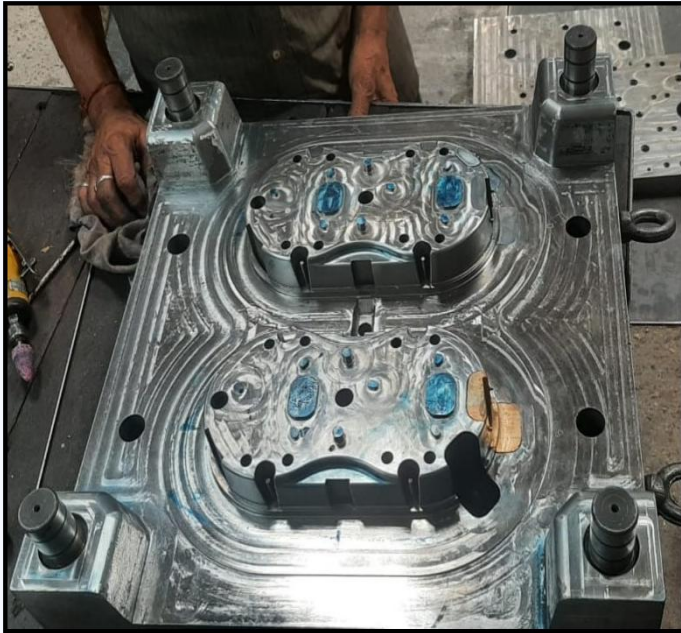
Shows the maximum volume shrinkage across the part thickness at current instant.  
High positive value represents big volume shrinkage, which may lead to sink mark or void.

# PROTOTYPING



# MOLDS MANUFACTURED BY US





# PRODUCTS RANGE



**MOLDS**



**PLASTIC ASSEMBLIES**



**PLASTIC MOULDINGS**



**ELECTROPLATED  
PARTS**



**EMBLEMS AND  
MONOGRAMS**



**REFLEX REFLECTORS**



**HOT FOIL STAMPED  
PARTS**



**PAINTED PARTS**

# OUR VALUED CUSTOMERS

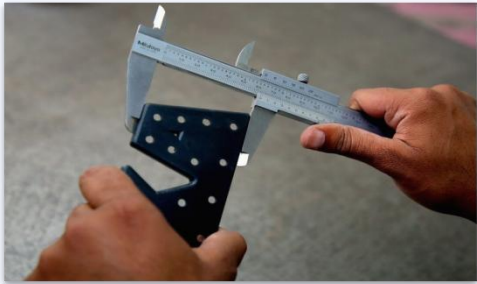
<u>TYPES</u>	<u>NAME OF COMPANIES</u>
• RAILWAY	RESISTOFLEX DYNAMICS PVT. LTD.
• TRACTOR	INTERNATIONAL TRACTOR LIMITED - YANMAR
	ESCORTS KUBOTA LIMITED
	TIRTH AGRO TECHNOLOGY PRIVATE LIMITED
	ADICO ESCORTS
• TWO WHEELER	INDIA YAMAHA MOTORS PVT. LTD.
• THREE WHEELER	PIAGGIO VEHICLES PRIVATE LIMITED
	J.S. AUTO PRIVATE LIMITED
	CONTINENTAL BAXY
• FOUR WHEELER	ICML
• TIER – 1	HELLA INDIA LIGHTING LIMITED - FORVIA
	MINDA STINERIDGE INSTRUMENT LIMITED
	SEKISUIDLJM MOULDING PRIVATE LIMITED
	GOYAL ENGINEERS
• HOME APPLIANCES	V-GUARD
• E-RICKSHAW	STAR IGLOBAL
	GAYATRI ELECTRIC VEHICLES
	HIM TECHNOFORGE LIMITED

# QUALITY ASSURANCE

At Pragati we constantly strive for **Quality** and **Perfection** in all the activities we undertake and have made it our mission to meet and exceed our customer expectations. To achieve this, we have robust quality management system to ensure highest quality standard across all our products.

## Key highlights of Quality Management system:

- ISO 9001:2015, 14001:2015, 45001:2018 Certified
- E-9 Certification for safety components
- Use of APQP for new developments
- Application of PPAP, MSA, GRR and SPC techniques to ensure quality
- Utilising PDCA cycle, CAPA and 8D tools and quality circle to prevent reoccurrence
- Inhouse lab facilities with NABL approved labs for Weatherometer test, UV Resistance test, CASS test, UTM testing, etc.
- Inspection of incoming materials to certify them for first time OK production.
- Following 5S, 3M, Kaizen principles and FIFO on shop floor.
- Outgoing inspection of each lot to ensure customer satisfaction



# CUSTOMER RATINGS

<u>CUSTOMER RATING</u>	<u>Percentage</u>
INTERNATIONAL TRACTOR - YANMAR	90%
YAMAHA	90%
ESCORTS KUBOTA LIMITED	86%
HELLA	93%

 **SONALIKA**  
LEADING AGRI EVOLUTION **YAMAHA**  
*Revs your Heart* **Kubota**  
Escorts Kubota Limited **FORVIA**  
**HELLA**

# PRAGATI ADVANTAGES

- ▶ Local warehouse of Pragati to ensure just-in-time delivery and no line stoppage.
- ▶ Complete in-house tool room, so better control over manufacturing and shorter delivery time (4-5 moulds in one month of size 346 x 296 mm).
- ▶ Spare capacity of 40%.
- ▶ **Variety of parts under one roof** – Injection moulding machines with capacity to serve smaller to bigger parts.
- ▶ **Variety of post processes** – Plating, Painting, Assembly (All under one roof). Less hassle for part development manager.
- ▶ Quality check at every step and in-house lab that supports us, thus, ensuring tension free operations.
- ▶ Prompt reply by our every team member so your development personnel stays updated regularly



# CONTACT DETAILS



[www.pragatiinds.com](http://www.pragatiinds.com)



[info@pragatiinds.com](mailto:info@pragatiinds.com)



098131-78548



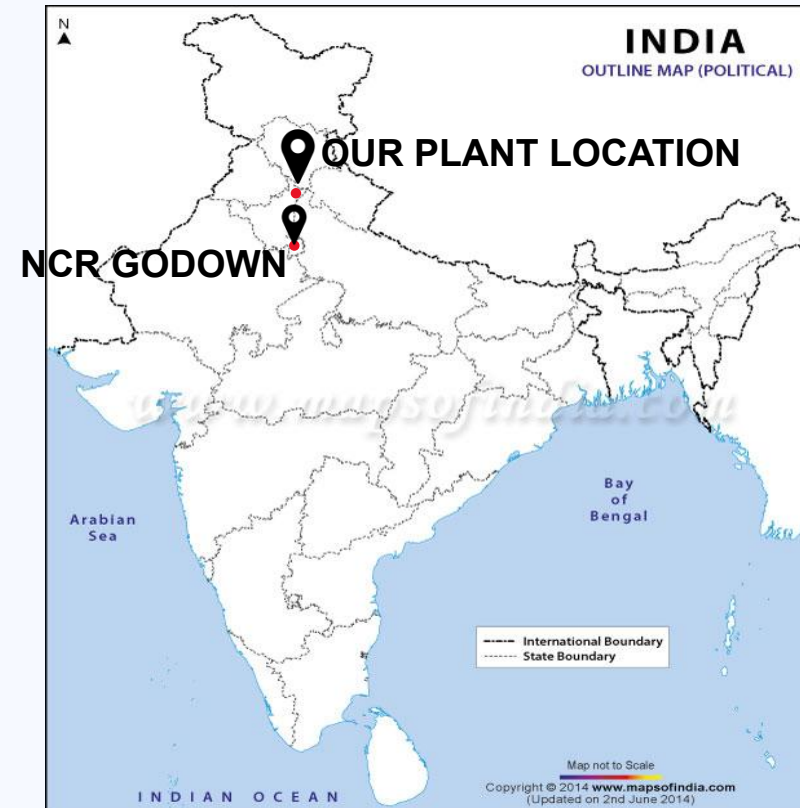
On NH-907



Ambala - Saharanpur mainline



Chandigarh-Mohali airport



## **ADDRESS:**

#28, Sector-30, HSIIDC Industrial Estate  
(Phase - II) Manakpur, Jagadhri – 135003

Distt. - Yamuna Nagar (Haryana) India

**THANKS**